



Software Solutions

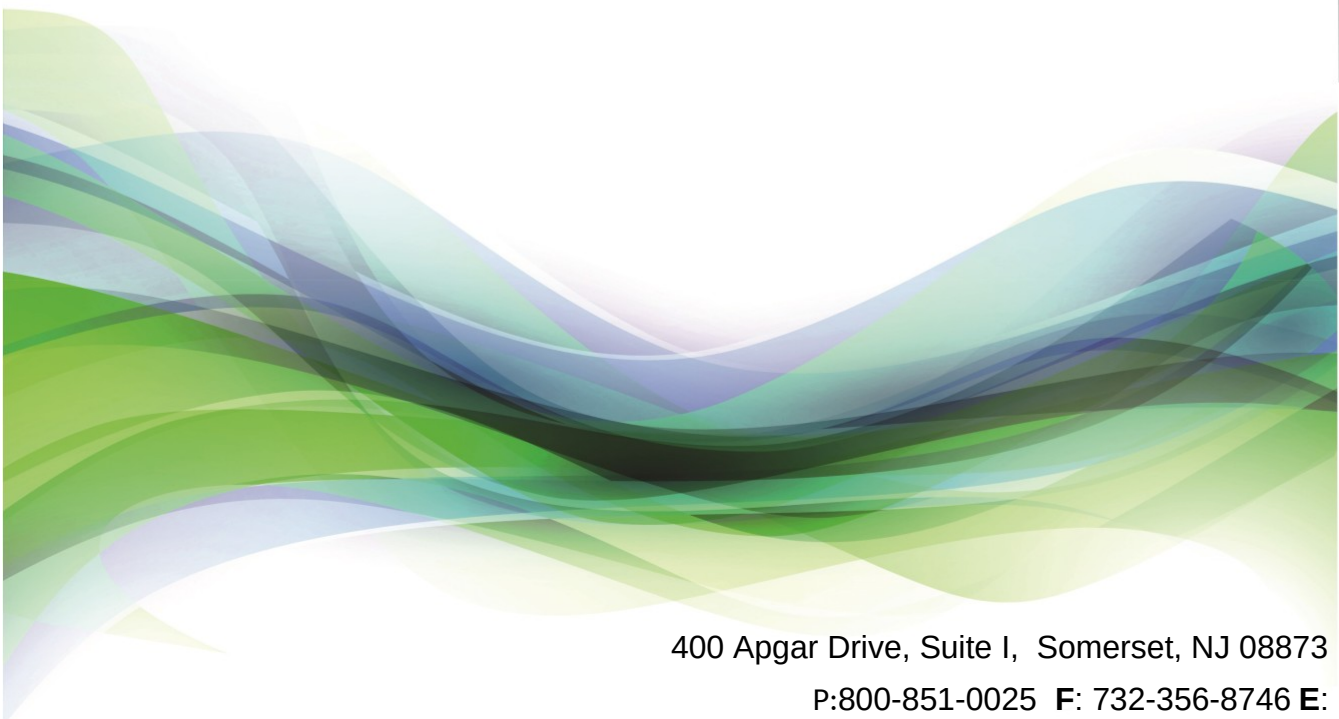
NMIS Enterprise Installation Guide



ec² Software Solutions

Software for the Molecular Imaging Community.

This installation guide is intended for customers
who will install NMIS Enterprise with an
external SQL database.

A decorative graphic at the bottom of the page consists of several overlapping, wavy, semi-transparent bands in shades of green, blue, and purple, creating a sense of motion and depth.

400 Apgar Drive, Suite I, Somerset, NJ 08873

P:800-851-0025 F: 732-356-8746 E:

info@ec2software.com

Introduction

NMIS Enterprise

The NMIS Enterprise system allows your facilities to interconnect and share information across departments and facilities. This guide provides the installation instructions for setup of the NMIS enterprise server, the SQL database and the NMIS workstation.

If you need help at any time during the installation, please contact our [technical support](#) team. We appreciate your business and look forward to serving you.



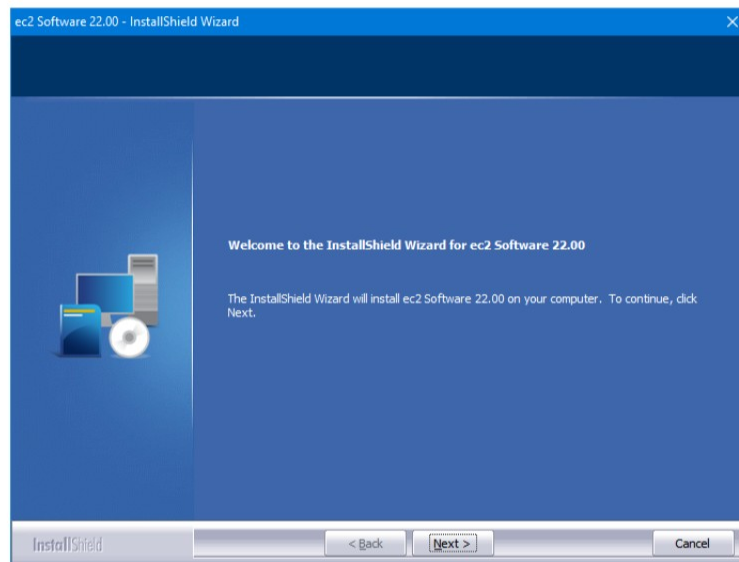
Table of Contents

Introduction	2
1. Server Installation	4
2. SQL Database Configuration Tool	10
2. 1 Access the SQL Database Configuration Tool.....	11
2. 2 Create a SQL Login	11
2. 3 Create a Database	12
2. 4 Set the Database Owner	12
2. 5 Update the Data Source Name	13
2. 6 Initialize the Databases	13
3. Workstation Installation	14
Contact Information	17

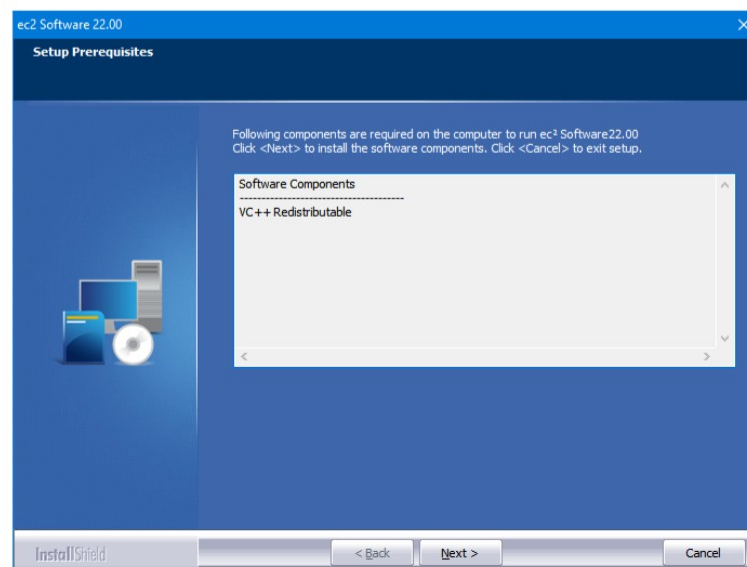
Server Installation Instructions

1. Server Installation

- a. Insert the disk labeled with your facility name and “**Enterprise**” into the disk drive.
- b. Double click on **Computer** on the desktop and locate the disk drive. Look for the label **ec2_version #.xx_Cust#xxxxxx** and double click on it.
- c. Double click on the **setup.exe** file.
- d. Click **Next** on the **Welcome** screen.

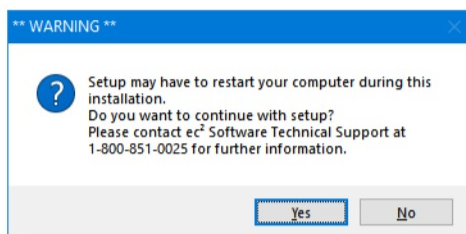


- e. The installation program will examine your computer for the required components and missing components will be listed.

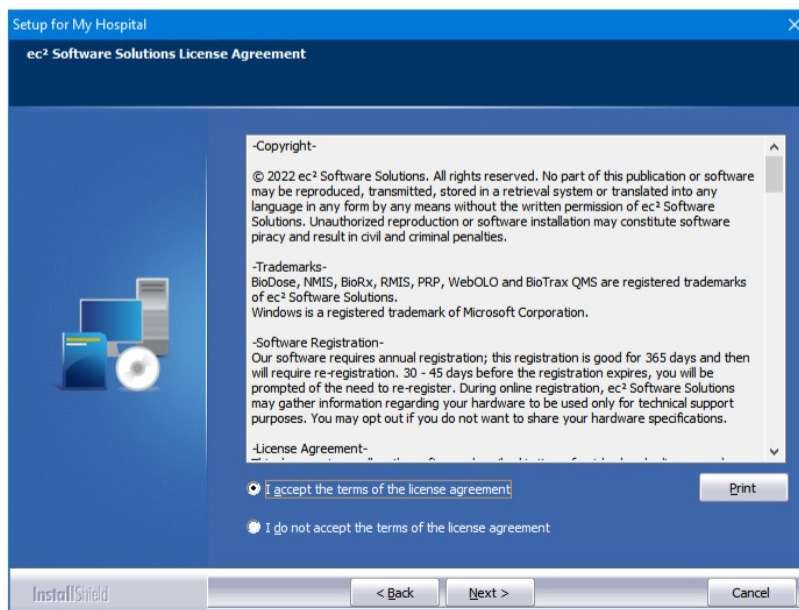


Server Installation Instructions (continued)

- f. Any missing components will be installed. Click **Next** to continue, follow the screen prompts and restart when necessary.
- g. Click **Yes** on the below message to continue.

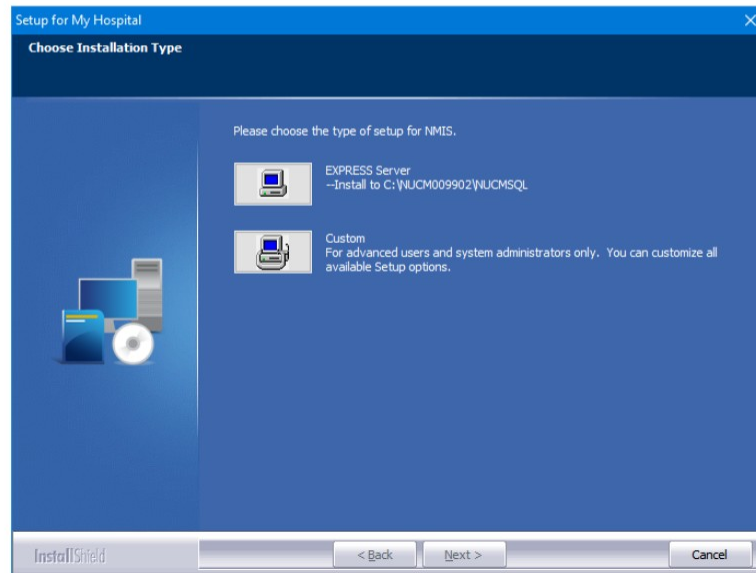


- h. On the **License Agreement** screen select the **I accept the terms of the license agreement** radio button.
- i. Click **Next** to continue.

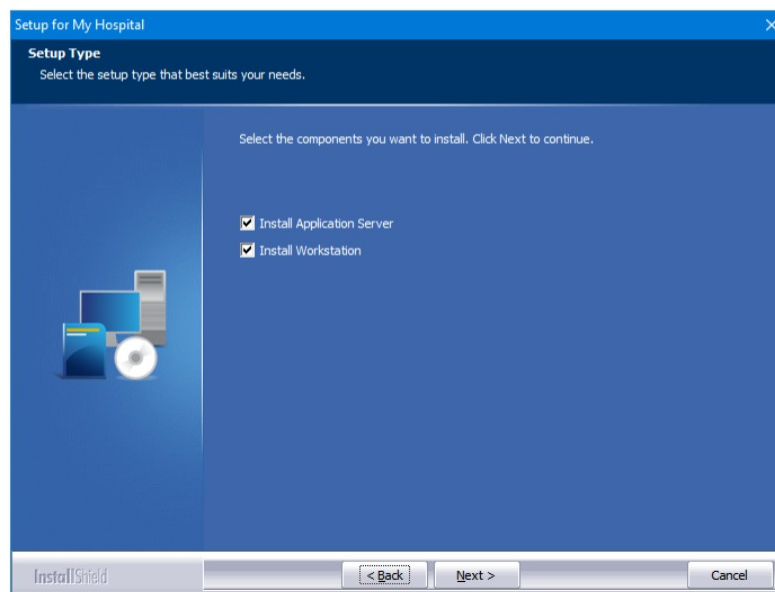


Server Installation Instructions (continued)

- j. Choose the installation type and click **Next**. **Custom** setup allows you to select the drive and directory. **Express Server** setup will install NMIS at **C:\NUCM#####**.

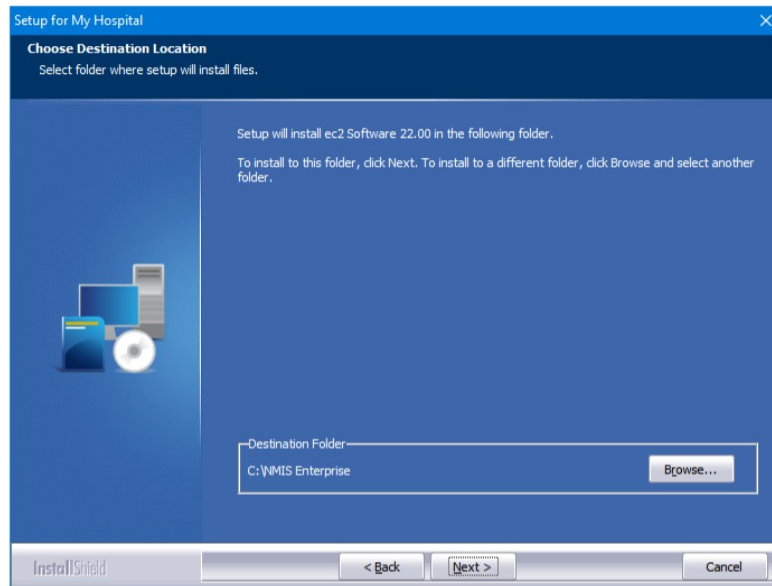


- k. Select **Install Application Server** and **Install Workstation**.
- l. Click **Next** to continue.

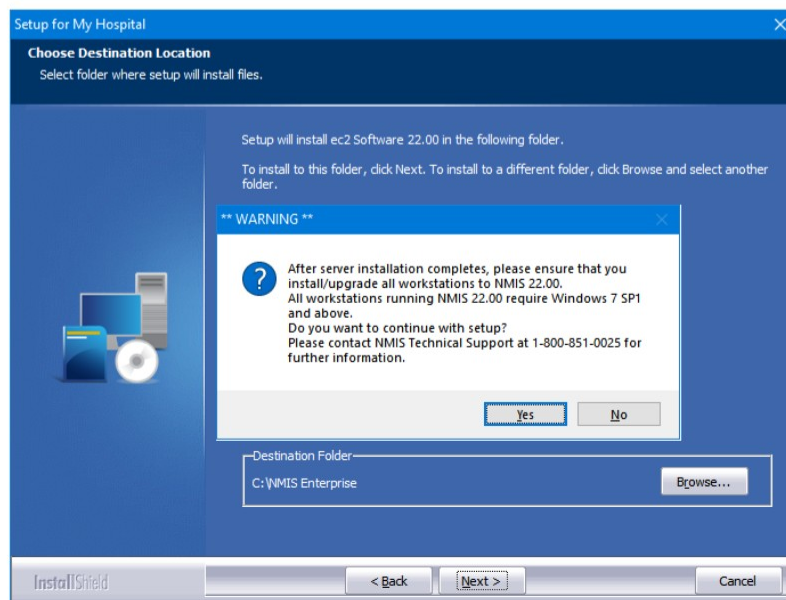


Server Installation Instructions (continued)

- m. Click **Browse** to select the destination folder if not shown.
- n. Click **Next** to continue.

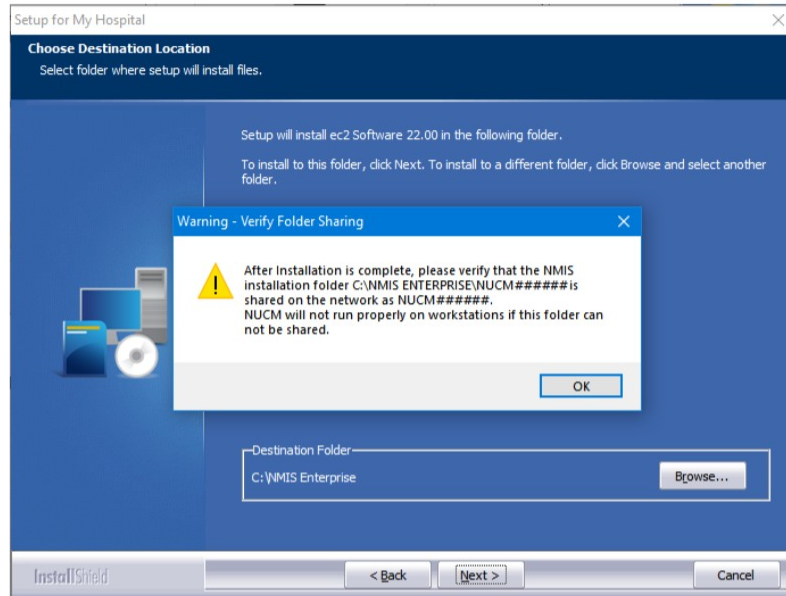


- o. Setup will need to restart your computer; click **Yes** on the below message to continue.

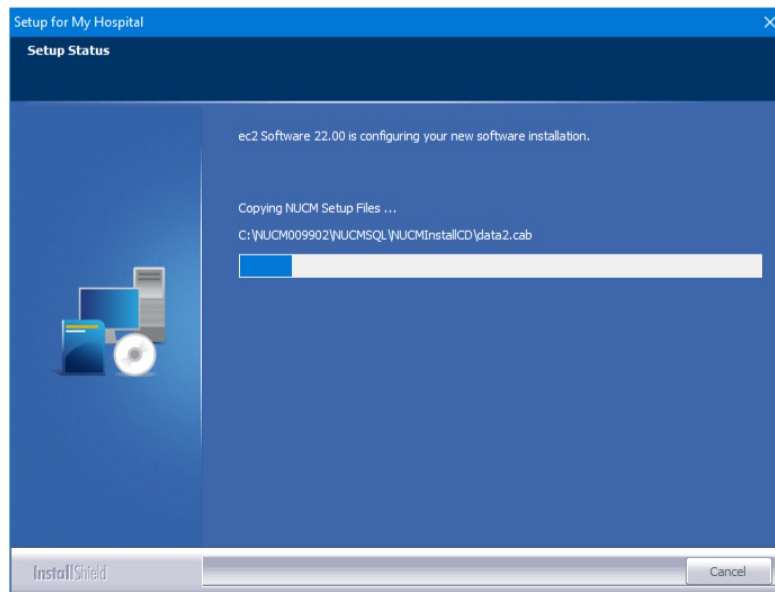


Server Installation Instructions (continued)

- p. Take note of the application folder sharing instructions.
- q. Click **OK** to continue.

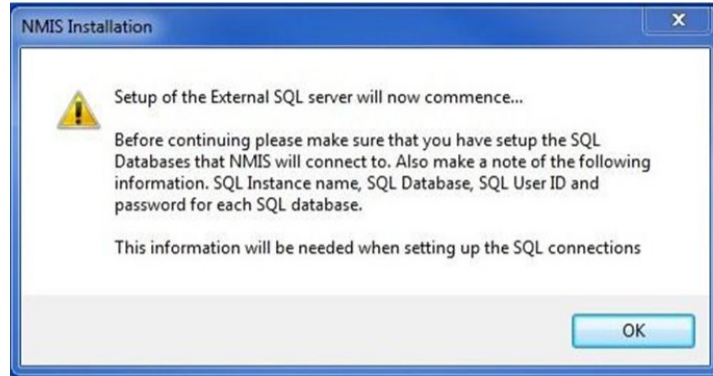


- r. The program will copy the installation files while the below screen is displayed.



Server Installation Instructions (continued)

- s. When installation has completed take note of the below instructions.
- t. Click **OK** to continue.



SQL Setup Instructions

2. SQL Database Configuration Tool

The SQL Database configuration Tool (ExtSQL.exe) is used to connect NMIS to your External SQL server and to configure the NMIS databases. This tool will be launched by the NMIS setup or you can launch it manually as described below.

The SQL instance where all NMIS databases will reside should be identified and be separate from other critical SQL instances.

#	Site	SQL Database	Restore DB	Restored On	Test DB	Status	Progress	De-Identify DB
0	0000 - [Enterprise Master] Testing Hospital - Main	EntMain	*Restore	2022-11-03 10:21:15	Test	None	0 %	
1	0001 - Testing Hospital - NJ (Facility_1)	EntSite1	*Restore	2022-11-03 14:54:13	Test	None	0 %	
2	0002 - Testing Hospital - NJ (Facility_2)	EntSite2	*Restore	2022-11-03 14:55:05	Test	None	0 %	
3	0003 - Testing Hospital - NJ (Facility_3)	EntSite3	*Restore	2022-11-03 15:05:21	Test	None	0 %	
4	0004 - Testing Hospital - NJ (Facility_4)	EntSite4	*Restore	2022-11-03 15:15:55	Test	None	0 %	

There are 2 ways to setup NMIS databases:

You can use your sysadmin password (SA) for your SQL server, or use Windows Authentication to create and initialize the required databases.

-OR-

Your Database Administrator (DBA) can create the databases manually using the SQL Server Management Studio.

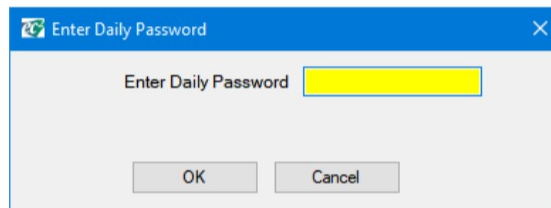
SQL Setup Instructions

2.1 Access the SQL Database Configuration Tool

The ExtSql.exe is the utility used to create and connect to the NMIS databases. You can run it at anytime to initialize the databases prior to launching the NMIS application.

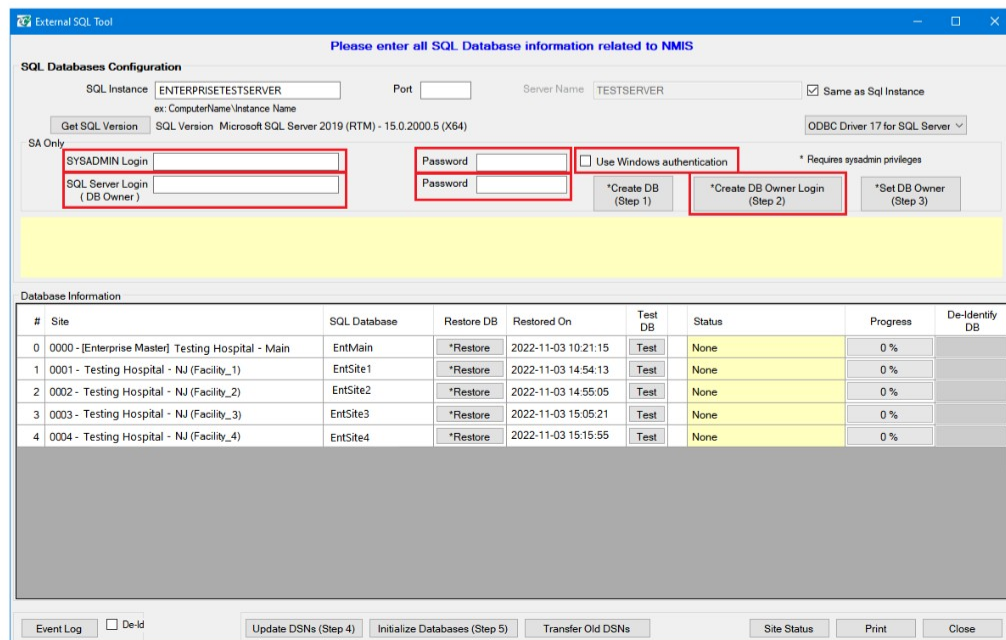
Note: Our daily password is required to run this utility. Please contact our [technical support](#) team to obtain the daily password.

- Navigate to the Enterprise\NUCM##### folder.
- Double-click on the **ExtSql.exe** file.
- Enter the daily password and click **OK**.



2.2 Create a SQL Login

- Enter the **SA Login** and **Password**.
- Enter the **DB Owner Login** and **Password**.
- Click ***Create DB Owner Login**.



SQL Setup Instructions

2.3 Create a Database

- Click ***Create DB**.
- Name the database; we recommend using the customer number and site ID or name.

The screenshot shows the 'External SQL Tool' interface. The 'SQL Databases Configuration' section includes fields for SQL Instance (ENTERPRISETESTSERVER), Port, Server Name (TESTSERVER), and SA Only login (sa/test). The 'Database Information' table is as follows:

#	Site	SQL Database	Restore DB	Restored On	Test DB	Status	Progress	De-Identify DB
0	0000 - [Enterprise Master] Testing Hospital - Main	EntMain	*Restore	2022-11-03 10:21:15	Test	None	0 %	
1	0001 - Testing Hospital - NJ (Facility_1)	EntSite1	*Restore	2022-11-03 14:54:13	Test	None	0 %	
2	0002 - Testing Hospital - NJ (Facility_2)	EntSite2	*Restore	2022-11-03 14:55:05	Test	None	0 %	
3	0003 - Testing Hospital - NJ (Facility_3)	EntSite3	*Restore	2022-11-03 15:05:21	Test	None	0 %	
4	0004 - Testing Hospital - NJ (Facility_4)	EntSite4	*Restore	2022-11-03 15:15:55	Test	Database successfully created	0 %	

2.4 Set the Database Owner

- Click ***Set DB Owner**.
- Click **Test** to verify the connection to the database.

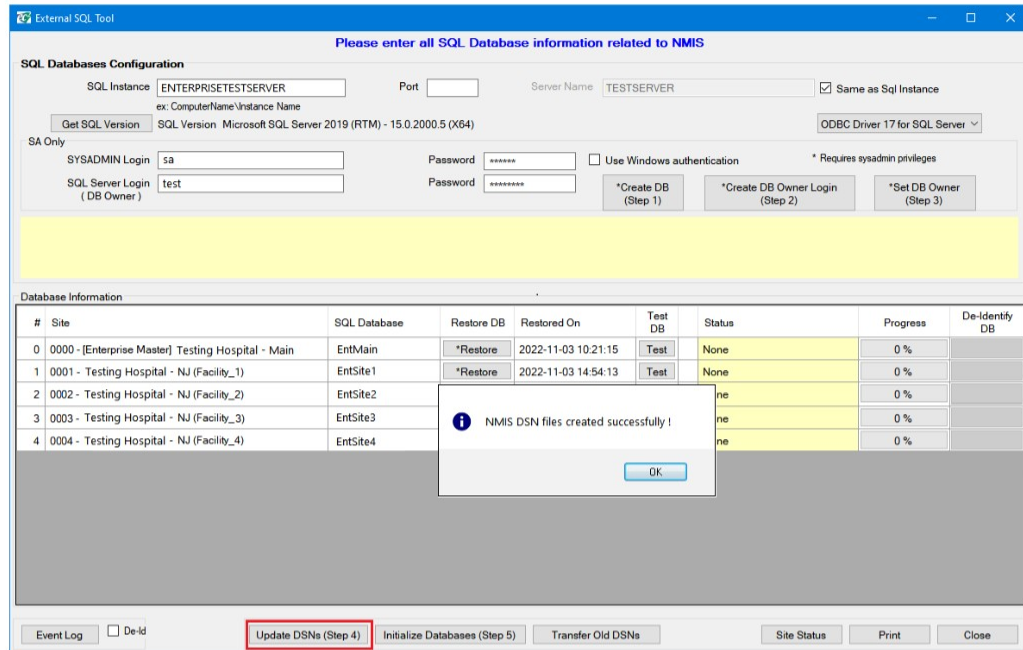
The screenshot shows the 'External SQL Tool' interface. The 'SQL Databases Configuration' section includes fields for SQL Instance (ENTERPRISETESTSERVER), Port, Server Name (TESTSERVER), and SA Only login (sa/test). The 'Database Information' table is as follows:

#	Site	SQL Database	Restore DB	Restored On	Test DB	Status	Progress	De-Identify DB
0	0000 - [Enterprise Master] Testing Hospital - Main	EntMain	*Restore	2022-11-03 10:21:15	Test	None	0 %	
1	0001 - Testing Hospital - NJ (Facility_1)	EntSite1	*Restore	2022-11-03 14:54:13	Test	None	0 %	
2	0002 - Testing Hospital - NJ (Facility_2)	EntSite2	*Restore	2022-11-03 14:55:05	Test	None	0 %	
3	0003 - Testing Hospital - NJ (Facility_3)	EntSite3	*Restore	2022-11-03 15:05:21	Test	None	0 %	
4	0004 - Testing Hospital - NJ (Facility_4)	EntSite4	*Restore	2022-11-03 15:15:55	Test	DB Owner set	0 %	

SQL Setup Instructions (continued)

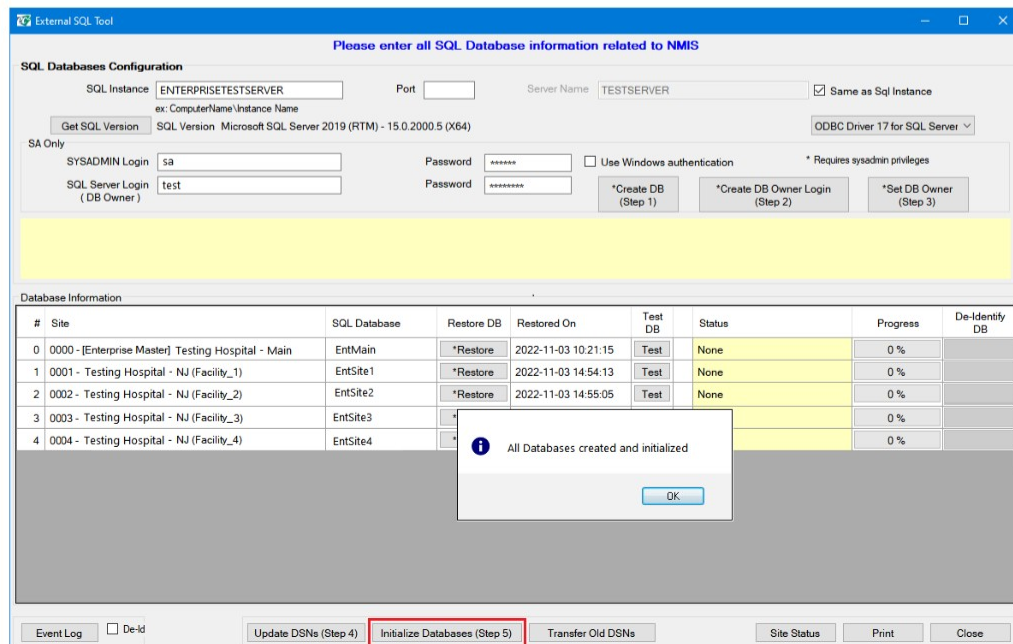
2.5 Update Data Source Name

- a. Click **Update DSNs**.



2.6 Initialize the Databases

- a. Click **Initialize Databases**.

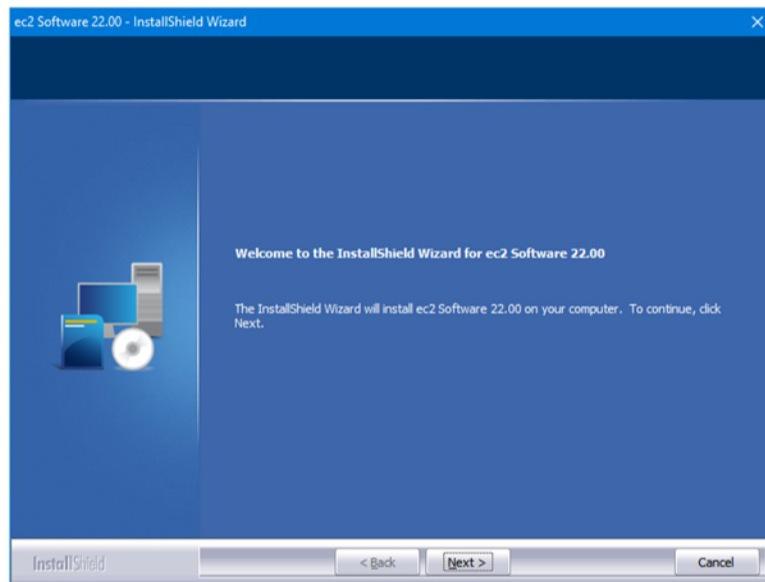


Workstation Installation Instructions

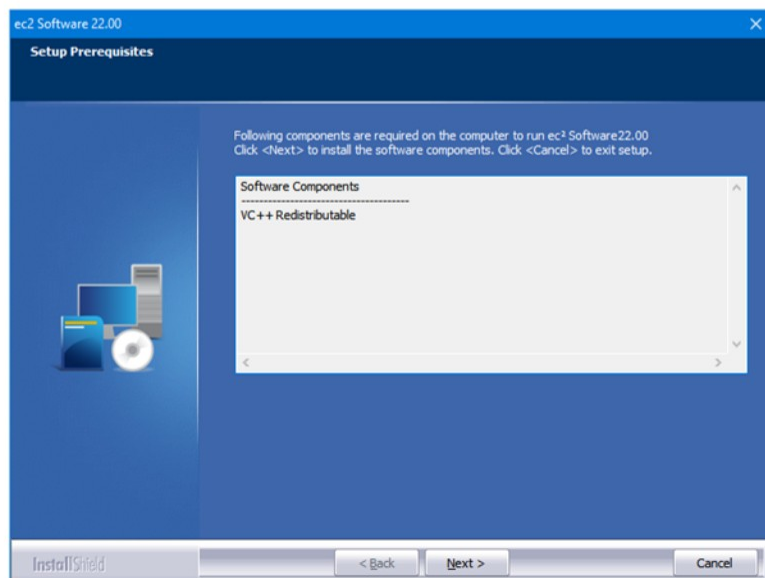
3. Workstation Installation

Note: You will not use the software disk to install the workstations.

- a. On the server locate the `\Enterprise\NUCM##### \NUCMSQL\NUCMInstallCD` folder.
- b. Double click the `setup.exe` file .
- c. Click **Next** on the **Welcome** screen.

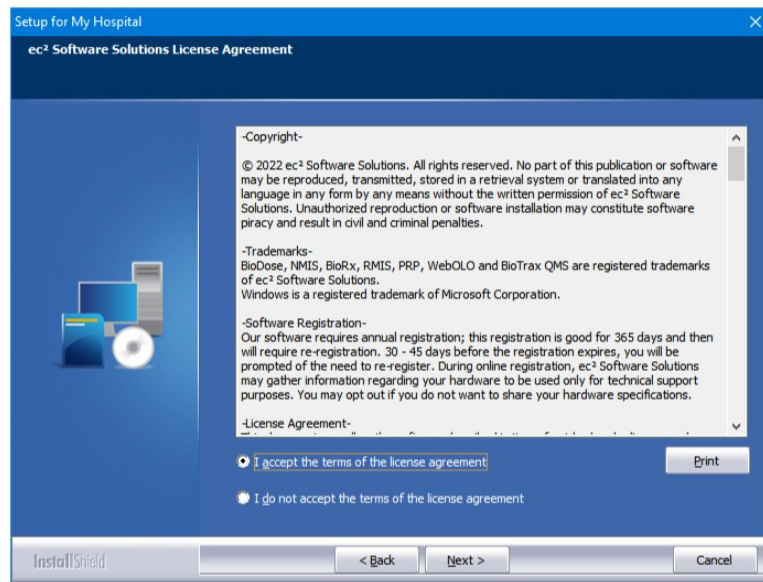


- d. The installation program will examine your computer for the required components and any missing components will be listed.

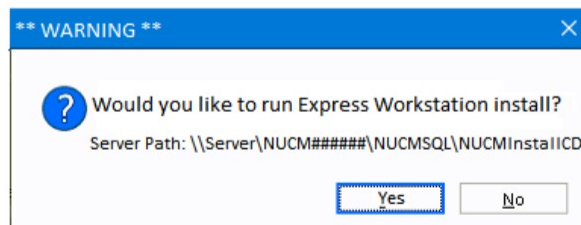


Workstation Installation Instructions (continued)

- e. The missing components will be installed.
- f. Click **Next** to continue, follow the screen prompts and restart when necessary.
- g. On the **License Agreement** screen select the **I accept the terms of the license agreement** radio button.
- h. Click **Next** to continue.

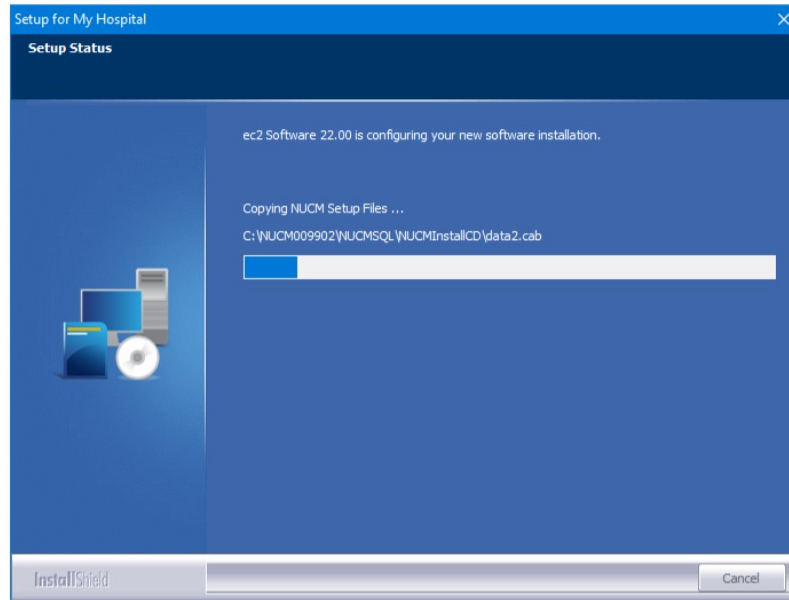


- i. Click **Yes** on the below message to start the installation.

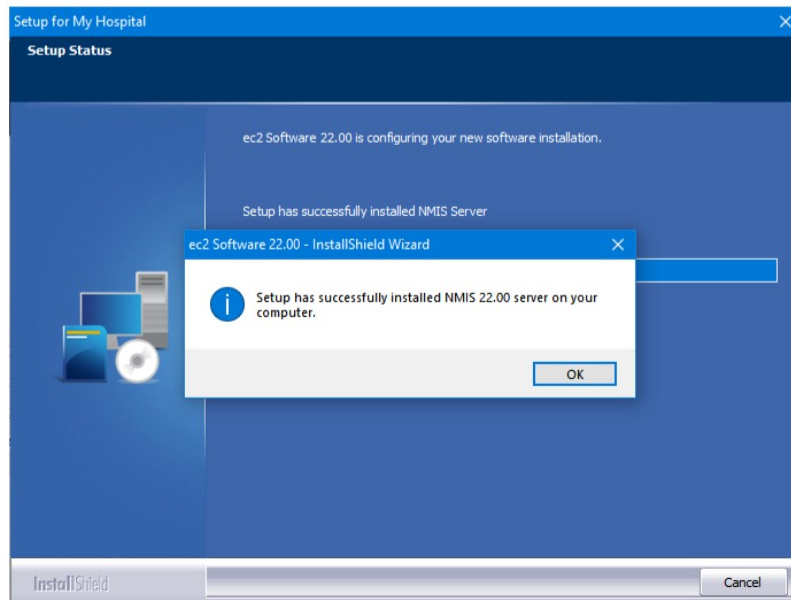


Workstation Installation Instructions (continued)

- j. The program will copy the installation files while the below screen is displayed.



- k. When the installation is completed the below screen and message will be displayed. Click **OK**.




Contact Information

If you have any questions please contact *ec² Software Solutions* technical support available Monday through Friday from 8:00 AM to 8:00 PM Eastern Time.

By Phone: 800-851-0025 option 1

By Fax: 732-356-8746

By Email: support@ec2software.com



400 Apgar Drive, Suite I, Somerset, NJ 08873

P:800-851-0025 F: 732-356-8746

E: info@ec2software.com